



# SHINE INTERIOR EMULSION



Version 2.0 | 01/2024

## Overview

Shine Interior Emulsion offer a budget-friendly way to refresh walls and surfaces, providing good coverage, durability, and adhesion. They come in a variety of colors and are suitable for interior applications. With proper surface preparation and application techniques, Shine Emulsion can achieve satisfactory results while providing value for money.

### Area of use:

For interior use which is especially suitable for dry and washable. It is especially ideal for spaces that don't require specialized paint features or high-end finishes but still need good coverage and durability. It is recommended that Shine Interior Emulsion be used after the application of Ultra Cement Interior Primer (WB).

## PRODUCT BENEFITS

### Versatility:

It is available in various colours allowing you to choose a suitable option that matches your aesthetic preferences.

### Coverage:

Despite being economical, it often provides good coverage and can effectively hide imperfections on walls and ceilings.

### Durability:

Shine Interior Emulsion is designed to be durable and long-lasting, providing good value for their price.

### Matt Finish:

Shine provides a matty finish with excellent and aesthetic look that gives your house the perfect outcome.

### Ease of Application:

It is typically formulated for easy application, making them suitable for residential or professional use.

### Suitable for routine touch-ups:

With its affordability and availability in small quantities, these paints are ideal for routine touch-ups or smaller painting projects within a space.

## SURFACE PREPARATION

### Cleaning:

#### Inspect for Leaks and Moisture:

Ensure there are no leaks and check moisture content before starting. Fix any leakages.

#### Clean the Surface:

Remove dirt, loosely bound powder, oil, and grease stains. Clean thoroughly with a brush or 180 - 220 grit emery paper.

#### Repair Cracks and Holes:

Crack Seal is to be used to fill in small surface imperfections such as dents, holes, and cracks that are smaller than 3mm. To level the surface, use Techno Wall Care. Only a mixture of fine sand and white cement (in a 1:3 ratio) can be used to fill large holes.

**Cure New Cement Walls:** Ensure new cement walls are fully cured for 28 days.

**Primer:** Apply a coat of *Ultra Cement Interior Primer* and allow it to dry overnight.

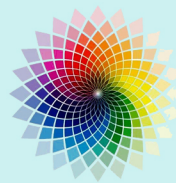
**Top Coat for Smooth Finish:** For a smooth finish, avoid using putty or filler for touch-ups after the first coat. Use *Techno Wall Care* to prime and level affected areas before applying the second coat of paint.

## PRODUCT FEATURES

### AVAILABLE PACKS



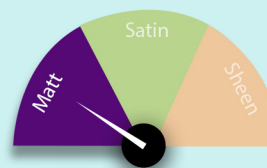
### AVAILABLE SHADES



# 1650+\*

\*Techno Paints Colour Spectra has 1650 plus shades at present.

### FINISH STYLES



### Range:

Sheen level 1 to 4  
at 60°\*.

\*On a glass plate when released at 150 micron DFT applied by 4 side applicator.

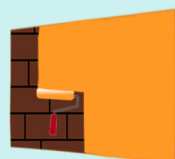
### DURABILITY AND WARRANTY



Durability, Economical, High Coverage.

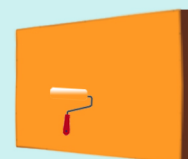
**WARRANTY: 3 Years**

### COVERAGE



#### 1st COAT

250 - 270 sq.ft./l\*  
4 hours dry time



#### 2nd COAT

130 - 150 sq.ft./l\*  
4 hours dry time

\* Coverage may vary from surface to surface, application method and % of dilution.



# SHINE INTERIOR EMULSION



Version 2.0 | 01/2024

## APPLICATION PROCESS



Brush: Nylon / Polyester



Roller: 1/4" - 3/4" nap, depending on surface texture.



Thinning: For movement of brush / roller, then dilute with 30% - 35% of universal solvent i.e water.



To Touch: 30 Minutes.

## TECHNICAL DATA

Primer Recommended	Yes
Thinner for Dilution	Water
Dilution Ratio of paint	300 - 350 ml / ltr.
Dry time for primer	8 hrs.
Complete Drying	4 - 6 hrs.
Flammable / Flash Point	Non Flammable
Shelf Life in tight container	3 year
Product form	Liquid
Recoating time	4 hrs

## ADDITIONAL INFORMATION

### POST PAINTING CARE

To maintain the paint's effectiveness, ensure the surface is washed and free from algal and fungal growth every six months.

### THINNED PAINT STABILITY

Best use the paint before 24 hours after the paint has been thinned.

### ENVIRONMENT

TECHNO PAINT PRODUCTS DOES NOT CONTAIN any added lead, mercury or chromium compounds.

### SAFETY

In the case of SKIN /EYE contact, immediately rinse with clean water and seek medical treatment.

### PRECAUTIONS

1. Applying while the outside temperature is below 10°C or if it could do so within four hours of doing so is not advised.
2. Avoid overstretching or overthinning the brush.
3. Before using, thoroughly stir and strain.
4. Strain the material before use for better smooth finish.
5. Make sure you avoid diluting with chlorinated water.

### DISCARDMENT

PAINT and Its Products comes under category of Hazardous Material and so for disposal it should be routed legally under Environment Act 1986 (Protection)& Hazardous Wastes (Management & Handling ) rules 1989.

### PERSONAL PROTECTIVE EQUIPMENT

1. Nitrile gloves / Cotton gloves
2. Goggles
3. Safety Shoes
4. Appropriate attire

